



Mr. Tsuyoshi Kano
Takashi Hanamoto

◆Career summary
Graduated from Ceramic Course, Kanazawa College of Art
The Commissioned artist of Onomichi Art Exhibition
The member of Hiroshima Association of Craft Artists

◆Birth place: Onomichi
◆Hobby: Riding motor bikes and cars. Drinking is also one of his favorites

Studio
Address : the 2nd floor North, Annex Tachibana,1-12, Shiomi-cho,Onomichi-shi,Hiroshima,Japan
Tel : +81 (0)90 8362 7703
E-mail : yuujiingama@gmail.com

◆Yuujiin Workshop
Ceramics art class and for children, Ceramics-Tea utensils, souvenirs, dishes for everyday-life, etc. Made-to-order is available.

He has two cute dogs. They are very friendly. When you visit Onomichi, please take Mr. Kano's splendid ceramic art class. Reservation by phone is available.

Feedbacks from our customers

From Mr. Shigeru Harada

I received a letter from Mr. Shigeru Harada, who draws pictures as a hobby. He has wonderful records to get a lot of prizes. I will introduce a couple of his paintings from his tremendous beautiful works. You can purchase his pictures.
If you are interested in them, please contact to Daimyo Company Limited.

Hello! I always read your newsletters. I engage in sharpening swords and restoring antique items like a sheath of sword. I draw pictures as a hobby also. I am still 66 year's old. I will do my best to enjoy my life more by three times, compared with others.



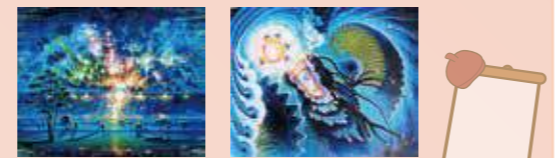
Dream Castle · Daybreak Castle

This is the imaged story for drawing this letter

When I went to bed, my grandfather always talked an old story to me. It is said that you can find a big castle, small castle and visionary castle when you go west. I thought I wanted to travel like him when I grew up. Severity of journey changed into light and wind covered with gentleness. It was like a feeling that even my mind had been cleaned. Passing through woods, a big castle with a morning mist was appeared in front of my eyes. That view impressed me, stopped my breathing and shook my body. I found the castle my grandfather talked about. I was very happy to begin my dreamed trip.

Reply to the comment:

Thank you for your letter and photos of drawings. Every picture is so wonderful. Each painting has close relationship with a story. I feel your sensibility is really magnificent. So, this is especially why you have received a lot of great prizes. While I have no knowledge about painting at all, I feel what Mr. Harada painted are honestly fantastic. I expect you will keep creating good works with enjoying your life more by three times.
Nakabori



Thunder Dragon

History of getting prizes and publishing

- 1994- He won a prize by the Exhibition of drawing Japanese nature supported by The Ueno Royal Museum. He also received a prize for new painter by Taishokai Bijutsu Renmei and became a member of it
- 1995- He got a prize by the Exhibition of drawing Japanese nature held by The Ueno Royal Museum.
- 1996- His work received a prize of fine work by the Sunday painter's competition supported by 'Ichimai no e' Co.ltd.
- 1997- He received Kusakabe's prize by Taishokai Bijutsu Renmei
- 2000- His works were published in Shin Bijutsu Shinbun
- 2001- He won a prize of Tokyo Museum of Modern Art by Taishokai Bijutsu Renmei. He was selected as a member of committee in Taishokai Bijutsu Renmei.
- 2003- His works were published in UNIVERS DES ARTS Japanese Edition(France). He displayed his works at the Exhibition of Turkey and Japan Modern Multinational Art. He received a medal. He exhibited his works at Brisbane(Australia).
- 2004- He got a prize at the third Tokyo ABC Exhibition. He received a premium prize by the exhibition of released beauty supported by Louvre(France).His paintings were published in Bijutsu Shunju. His works were eternally stored in the Imperial Household Agency, embassy, art museum, library, university in every country of the world and the RMS Queen Elizabeth 2.
- 2005- He won an encouraging prize by Taishokai Bijutsu Renmei.
- 2007- He got Special Recognition Award by Taishokai Bijutsu Renmei.
- 2012- He received a Sakon's prize by Taishokai Bijutsu Renmei.
- 2014- He won an excellent-work prize by Taishokai Bijutsu Renmei.

How about this Yamatodamashii? We need your opinions and feedbacks more. We are waiting for them!

有限会社 **大名**
Daimyo Company Limited.

Homepage: <http://daimyou-armor.com/>
2-1-3F, Kurihara-cho, Onomichi-shi, Hiroshima, Japan
Mail Address:daimyou51@gob.enjoy.ne.jp
TEL: 0848 29 3936 FAX: 0848 29 3937



We deliver **大和魂** Vol.7 August 2015

—The Philosophy of Daimyou ltd.—
Under our slogan of 'We deliver the YAMATO DAMASHII', the Daimyo ltd offers information about the Japanese history and antique goods and aims at guiding our customers to the old Japanese world by fulfilling our customers demands to antique gears.

- Index—**
1. I experienced ceramics (written by Nakabori)
 2. The story about 'YAMATODAMASHII' (written by Shimatani)
 3. I am going to make you back in time (written by Hanamoto)
 4. The profile of Mr. Kano (written by Nakabori)
 5. Our customers' feedback (written by Nakabori)

I experienced ceramics



Hello! This is Akemi Nakabori. I experienced ceramics at Mr. Tsuyoshi Kano's studio. He is a ceramic artist living in Onomichi and produces original cups of our company. (His profile is introduced in the next page)

First of all, I studied 'Tehineri', a way to make ceramics. I rounded soft soil like mud and put it on the center of hand potter's wheel. And I shaped it into a favorite one.
All of Daimyo members: 'Let's make cool coffee cups for daily use at our office!' But mine was like a bowl.
Shimatani: 'It is very interesting. The shape shows creator's character!'
CEO: 'Taachan (Shimatani)! You are great! Yours has a good shape!'
Nakabori: 'Teacher! Mine spreads flat no mater how I tried!'
The teacher taught me how to use fingers and add power gently. His teaching made mine return a shape of coffee cup somehow.



Hand potter's wheel



Teacher: 'Next, let's try electric potter's wheel'
He kneaded soil. Following him, my CEO did it by watching him. He said, 'When I was a trainee, the only thing I was asked to do was this, kneading. If soil contains air, bowls will become fragile. In order to prevent from it, kneading is an important work by which air does not include mud. I have been doing only this work for about three years.'
He has got training of making efforts, being patient and good skills. I re-recognized that what he made had high value because he put his whole soul to just every works which was not mass-production. I also believed he was evaluated as a professional potter.

Teacher: 'In case of using an electric potter's wheel, you should create a core with a lot of water and make a shape of bowl.'

Teacher's skillful example



CEO: 'Wow, it is so wonderful. His skill makes me pleasant. I want to do it soon!'
When the CEO turned on an electric potter's wheel, he was so good unexpectedly and made a good shape carefully. The teacher praised him as follows: 'So beautiful!'. What the teacher said made him so happy from beginning to end.
I wanted to do it well in my mind. But, actually, I had put too much power into soil. I had made four failures out of six. I found my clumsiness again.



We finished the experience of ceramic works that day. We will scrape a base of bowl and make coloring in the next chance. After completing this making, I am going to introduce the process of making. I noticed that it was very difficult to creat something by myself and felt the greatness of Japanese traditional professional's technique. I had a good experience and came to love Japanese ceramics more.

Have you ever tried ceramics? If so, please take a look of your work's pictures because I want to use them as references for the next time.



Our three persons' works.

I am going to tell you about

大和魂

Yamatodamashii

Thank you very much for reading this 'YAMATODAMASHI' constantly. I am Takako Shimatani—the writer of this column. Next to the previous article to talk about 'Bizenden', Japanese swords, I will tell you about 'Yamatoden' (classification of Japanese swords) in this article.



It is said that 'Yamatoden' is the oldest in Gokaden and the starting point of Japanese swords. The reason why it is the oldest is that many swords had been produced at Nara, the capital of Japan at that time, under the administration of those days till it was moved to Kyoto in 794 A.D. After the transfer of capital from Nara to Kyoto, Nara had few orders to create swords and deteriorated rapidly. But, in the late Heian period, Fujiwara family who had administrative power substantially set a high value on Buddhism and made efforts to build temples at Nara. They had a lot of monk soldiers. This situation revived the demands for blacksmiths at Nara. At this timing, a group which was called 'Yamato Goha' (Yamato five groups) was established.

'What is Yamato Goha?'

- 千手院 Senjuin**
the oldest group in Yamatoden
- 手搔 Tegai**
the group living in the outskirts of Todai-ji temple's Tengaimon Gate.
- 当麻 Taima**
the group related to Taima-ji temple
- 保昌 Hosho**
the group making swords at Takaichi County in Yamato Province.
- 尻懸 Shitsukake**
the group living in Temukai-yama Hachimanguu allegedly. But it is not clear.

Why?

Did Most of Yamato's blacksmiths use names of temples as group's ones like these?

Because:

They produced arms for monk fighters to protect temples as blacksmiths attached to temples. They are said to create swords at blacksmith's workshops, where were settled near the gates of Todai-ji temple, Senju-in, Taima-ji temple, etc. and roads connecting neighbors and temples which is currently existed in Nara prefecture.

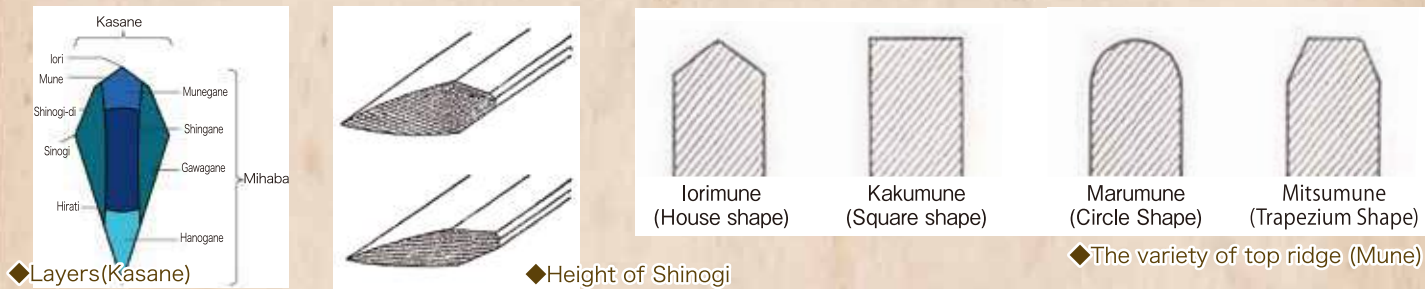
These swords had some characteristics which had practical structure in order to use in repeated actual combats and civil war. And most of them had no blacksmith's name on them because it was courtesy at that time to do so in case of offering them to clients directly or noblemen. Blacksmiths were unable to leave even their names on swords, what they produced with their whole hearts, and shared their fates with temples. What on earth kind of feeling the blacksmiths had?

Why?

What kind of a sword such functional Yamatoden is?

Because:

Its layers(Kasane) are piled up very much. In order not to be heavy, side ridges(Shinogi) on this blade are very thin. So, the sword is totally thick. And its top ridge(Mune) is like house's shape(Iorimune) and characteristically high.



Yamatoden has the clearest Nie in Gokaden and you can find many Nie characteristically (Nie is a drop which you can recognize each in detail with naked eyes when you see a blade under bright light. But this characteristic was not so outstanding in Muromachi Period and straight temper lines on a sword came to be remained as a feature. ◆Nie



I have some questions how Japanese swords were used. I think they were what killed people. But, they seemed to be used for stabbing gaps between armor rather than for cutting them down during battles.

I guess swords made in Yamato which were used actually were stout but very sharp and light

If I have a chance to hold some swords with nicks in blades, I am going to watch carefully whether they were practical for actual battle or not



◆Ha-Kobole

Hanaemon's Make you Back in time Yoshiaki Mogami



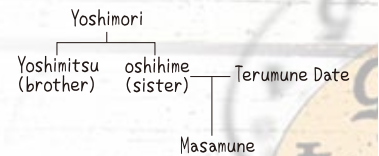
In this article, I will talk about Yoshiaki Mogami (1546-1614), an uncle of Masamune Date about which I wrote in the previous article. Yoshihime, a sister of Yoshiaki, was Masamune Date's mother.



Yoshiaki Mogami

At that time, Mogami family was under the control of Date's family. He succeeded Mogami family when he was 24 year's old. **But, the relationship with his retired father got worse.***

*Yoshimori, his father, intended to make Yoshitoki, Yoshimori's second son, the present head of family, instead of Yoshiaki, Yoshimori's eldest son. It is said that this was the cause of problem. However, nobody can find trustworthy evidences that the name of Yoshitoki was described. So, the reason of deteriorated relationship between Yoshiaki and Yoshimori is said to be unclear. Terumune Date, a father of Masamune, took part in the conflict between the father and son and was going to increase his strong influence to them. But Yoshiaki was a great commander and fought well against Terumune. He was successfully independent from Date's family. When he was 38 year's old, he became a warring daimyo with the territory in which 24 thousands koku of rice were able to be raised. Since he joined the eastern army whose commander was Ieyasu Tokugawa in the battle of Sekigahara, he was the first daimyo of Yamagata Domain in Dewa Province with the territory in which 57 thousand koku of rice were able to be produced (1 koku = 150 kg or 330 lbs.)



In the historical drama, 'Dokuganryu Masamune DATE' broadcasted by NHK (Nihon Hoso Kyokai, Japan National Broadcasting Corporation), he was characterized as a villain from a standpoint of confronting Masamune, the leading part of drama. So, NHK was flooded with tremendous complaints by Yoshiaki's supporters. As he had a nickname of 'Fox Commander in Ushu', Yoshiaki had a strong impression to deceive others so often. To be sure, Yoshiaki made strategy and expanded his territory. But it is said that the reason why Masamune betrayed his first lord and changed sides of Yoshiaki was that everyone knew Yoshiaki's broad-mindedness

The revival of family Yoshiaki destroyed

Yoshiaki killed Sagae family. But he listened to the requests by Sagae's men and revived its family.

'The relationship in a general, officers and solders are like a hand fan: the pivot=general. bones=officers. papers=solders.'



He said, 'Officers and solders were like my children because an army will not work even if one part has been lost.'

Yoshiaki who loved salmon

When he territorialized the Shonai province which connected to the sea, he wrote a letter to his vassal, 'I will eat salmon, my favorite food, so often.' From this episode, he was called 'Salmon lover'



On the other hand, he's well built. He left some episode as a brave military commander.

Yoshimori's lifting stone

In order to move the big stone, 7-8 persons were needed. But when he was 15 year's old, he moved it easily. This rock is currently existed at Zao Onsen (Yamagata-Shi)



◆Yoshimori's lifting stone.

You are the general!

Yoshimori rushed into the enemy's line as a single horseman, took enemy's head, and returned with his smart face. Morimune Ujiie advised him with tears 'Please don't do thoughtless behavior because as you are a general.'

Stopping a plan of assassination and giving reward

Someone asked Yoshimori to kill Goro Oi, an extraordinary man, because he was too tyrannical. So, Yoshimori called him to the castle. He ate meals for 5 or 6 persons with ease. Yoshimori said, 'You are super! Since I like a dynamic man like you, I will give some rewards. The reason why I asked you to come to the castle is that my men requested me to assassinate you. Please don't behave recklessly!'

Yoshimori was brave and got a lot of respects from his solders. But he placed high importance on planning and researching rather than battling directly. I guess one reason why he did that was the strength of Mogami's family. But my understanding is mainly because he did not want that many people were killed, the territory got damage by war and agricultural products on fields were stolen by solders.

