

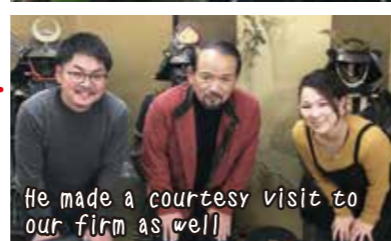
# A painting work by a customer of our company was selected as a cover of information magazine of Onomichi Municipal Government, 'Koho Onomichi'.



Hello! This is Akemi Nakabori. Onomichi Municipal Government where I am living now publishes a monthly information magazine, 'Koho Onomichi'. A painting work by a winner in an exhibition of painting Onomichi was said to be used as a cover page of the information magazine in January. What a surprise! The work used as the cover is painted by Mr. Takeo Tabata, one of our clients who is living in Shizuoka. Congratulations! When he was going to attend the prize-awarding ceremony, he headed to Onomichi from Shizuoka and had a courtesy visit to our company!



The prize-awarding ceremony



He made a courtesy visit to our firm as well.

I made a couple of questions to Mr. Tabata

**Nakabori:** Mr. Tabata, why did you decide to paint a picture about Onomichi?

**Mr. Tabata:** This is my third visit in Onomichi. I like scenic views of Onomichi. The landscape of Onomichi Channel from Senkoji Temple is also amazing. And, I like Onomichi Ramen noodles as well.

**Nakabori:** Do you remember landscapes and paint them?

**Mr. Tabata:** I take some photos of places I feel excellent at a glance and mix some colours of views at that time. And I complete my works.

**Nakabori:** Painting a picture seems difficult.

**Mr. Tabata:** Not so as you think. I often teach how to paint a picture at nursing care facilities. Everybody says painting a picture is unexpectedly easy. First of all, I let students like to paint a picture and enjoy painting.

**Nakabori:** I see. Letting them like to paint a picture is more significant than teaching how to paint an excellent pictures.



Onomichi Ramen noodles



I had a lot of talk with him. I got a lot of passion toward painting from Mr. Tabata. I have heard that the works he got the first prize at the exhibition was presented in Onomichi City Museum of Art. I went there to see it. Because I have no knowledge about painting at all, I am not sure about how to describe my feelings. What I felt by Mr. Tabata's picture is peaceful Onomichi.

The very ordinary views in my daily lives are calm and happy. I felt again I was born and raised at Onomichi which favoured beautiful mountains and sea as well. Then, I came to love Onomichi more and more!!

I am looking forward to Mr. Tabata's works. I really appreciate his visiting to Onomichi. I hope his continuous support from now on.

\* I get a permission to publish this cover of information magazine in the newsletter by the public informational section in the secretarial and public informational department of Onomichi Municipal Government  
\* I receive a special permission to take a picture in the art museum by Onomichi City Museum of Art.

How about this Yamatodamashii? We need your opinions and feedbacks more. We are waiting for them!

Please write as 'Sub: reply to the newsletter' and send it to us



有限会社 **大名**  
Daimyo Company Co., Ltd. **Homepage : <https://daimyou-armor.com/>**  
**The 3rd floor, 2-1, Kurihara-cho, Onomichi-shi, Hiroshima, Japan**  
**Mail Address : [daimyou51@g06.enjoy.ne.jp](mailto:daimyou51@g06.enjoy.ne.jp)**  
**TEL : +81 (0)848 29 3936 FAX : +81 (0)848 29 3937**

# We deliver 大和魂 Vol.29 Apr. 2019



## Setouchi Inland Sea was nominated as one of 52 travel destinations to go in New York Times.

Do you know the Shimanami Kaido in such Setouchi Inland Sea? They are road and bridges connecting between Onomichi-shi, where our company has a main office, and Imabari-shi in Shikoku. 'The cycling road' running though Shimanami Kaido (70Km in length. In islands, this cycling road is settled on ordinary roads) is the first bicycle road which enables people to cross channels by bicycles in Japan.

### So! We thought we needed to feel the history by cycling and decided to set the cycling road as a destination of this Daimyo's study tour.

We rode a bus for sightseeing with 'Mr Takayuki Shishido who was working Taihei Kotsu Co., Ltd.' He made a plan for us to be able to enjoy cycling easily in spite of no confidence in physical fitness. First of all, we got his explanation about a bicycle at Tachibana, Mukaishima Island. An instructor was Mr. Hiroki Watanabe who belonged to 'Setouchi Annaisha Tabitasu'!. He is a well-known person in cyclists



The first guide in this tour  
Abus will attend you. Don't worry.  
The second guide in this tour  
'Mr. Takayuki Shishido, a good-looking driver of Taihei Kotsu Co., Ltd.'



The second guide in this tour  
'Mr. Hiroki Watanabe, a charismatic cyclist of Setouchi Annaisha'



We hope your support!

**Our itinerary (about 4hours)**  
Getting some explanations about bikes  
Cycling on Innoshima Bridge  
Murakami Navy's Castle  
Inuyama Shrine  
MukaiShima Island

### Now, we start! Our destination is Innoshima Bridge!!



This speed is all right?

Now, a hill is coming

Just arrived~

Easy!



Excellent!

We are likely to go though the bottom road by bicycles under the top road for motorcars.

★This is the only place where cyclists can go though the bottom road of bridge. Since cyclists have to run on the cycling road with no sunshade on the cycling road, they often take some rest here. It is so comfortable.



The wind is so pleasant

We have just arrived at the border between 'Innoshima' and 'Mukaishima'!

The bridge we passed  
So beautiful!  
Continue to the bottom  
Next to the middle page

Because it was a sunny day, we were able to get good scenery with comfortable winds as well. They made us very happy. The colour of sea from the bridge was also beautiful. The scene that a ship was moving slowly made us forget the bustle of daily life. It was the best as we might never felt it tired even though we saw the view again and again.

★So, there is a little plankton in this season. You can see the beautiful sea. (This photo was taken in 26th, February)

# Next destination Innoshima Navy Castle

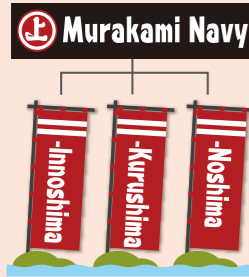


The Navy Castle was authorized as one of the 19 places in the second stage of Japanese Heritages sites on April 25th 2016. Historical resources Mr. Innoshima Murakami had left-battle gear, belongings, old documents and so on were presented in the Navy Castle.



Ohatakefune 1/12 Model(26 cm in actual size)  
\* Taking picture in the museum is permitted.

## The chart of Murakami Navy



Murakami pirates consists of three families of Gaiyo Islands called as a dangerous spots of voyage. They had flourished in Seto Inland Sea since the middle of 14th Century and had the awareness of same family even though they had repeated cooperation and hostility. Lu s Fr is, a missionary, allegedly called them as 'the biggest pirates in Japan'.

Murakami Navy had commanded the Seto Inland Sea for couples of hundred years, took part in battles, guarded a delegation and so on. Different from 'pirates' who attacked ships and stole money and valuables from victims, the navy guaranteed the safety of sailing according to the rules and made it sure to keep the order of trading and distribution in Setouchi Inland Sea. Murakami Shinkuroudo Yoshimitsu, the sixth head of the Innoshima Murakami, especially played a part of Mori Security Forces at the navel battle of Kidugawagushi in July 1576 .He wiped out the Oda Navy commanded by Nobunaga Oda and contributed to Mori's winning.



Murakami Shinkuroudo Yoshimitsu,

It is said that Yoshihiro Murakami, the origin of Noshima Murakami Navy, lived at 'Aokage Castel' which you can see from Suigun Castle. This castle is the centre of Innoshima and from this place, Aokage Castle, he was allegedly able to see all of Innoshima.



## Konrenji Temple



Yoshisuke Murakami, the second head of the Innoshima Murakami, founded this temple in 1450. It is not certain which tombstone was who. But the tombstones of Innoshima Murakami and their retainers were allegedly collected in the cemetery of temple precincts.

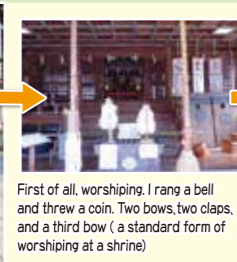


The cemetery of Murakami Navy

The Guardian God of Innoshima Murakami Navy,  
The Deity of cyclist

## We finally arrived at our final destination. 'Ooyama Shrine'

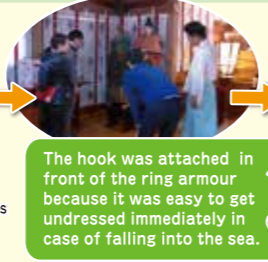
Ooyama Shrine was built at the small hill where you were able to see islands of Seto Inland Sea in Habu-choof Innoshima along Shimanami Kaido. It is the oldest shrine praying for the coming of a deity from 'Ooyamadumi Srine' at Omishima in Iyo province in 773. The shrine was revered as the guardian deity of Innoshima Murakami Navy which had a huge power between Period of Northern and Southern Courts(1336~) and Azuchi Momoyama Period(~1603). In this tour, by special grace of Mr. Shishido and Watanabe, the shrine exceptionally invited us, Daimyo promoting Japanese history and old antiques, to a place ordinary people was never able to enter.



First of all, worshipping. I rang a bell and threw a coin. Two bows, two claps, and a third bow ( a standard form of worshipping at a shrine)



To this level, everybody can enter this place when you receive prayer services and so on. But, wow! we were able to make one more step to an upper level



The hook was attached in front of the ring armour because it was easy to get undressed immediately in case of falling into the sea.



What I found was!

Ring armour the Navy wore actually!

## ★The god of cycling



The Guardian deity for bikers Praying for traffic safety and security against thefts

This shrine deifies Watashi God, a deity of traffic safety and crossing bridges. Cyclists can receive prayer services for traffic and travel safety with whole bikes. So, the shrine came to get a name of bicycle shrine.

## ★Ooyama Inari



The God of good fortune and thriving business



It is Murakami Navy's watch tower

Bamboos are gathered in one place because of protection against bullets fired by matchlocks.

## Ogami Stone



If the time your dream is likely to come true is around the corner, you feel this stone light when you carry it to the level of chest. When you feel it heavy, the time your dream comes true is far. This legend remains.

## ★The Deity of construction, fortune by the direction and protection against misfortune



## ★The God of year The God for preventing ear sickness and getting good information



'Mimigo Shrine' is also called as 'Yutoku Shrine'. When Yasutaka Fujiwara, an ancestor of Makihata Family, visited Innoshima Island at the beginning of Kamakura Period(about 800 years ago), he deified Soshin Amano Mikoto, the god of Japanese myth. This is said to be the beginning of this shrine. When you get prayers service about your ears with offering Japanese sake and rice in turban shells, it is said that your dream often comes true. Due to this tradition, massive amounts of turban shells are crammed on the shrine.

## ★The Setouchi Seven Deities of Good Fortune



In front of these Seven Deities of Good Fortune



The bridge your dream comes true

A narrow and long bridge is 'the dream bridge' and you should cross it with making a wish. After that, you should quickly pass over 'the bridge for dream coming true' which is wide and short, and your dream is said to become the real.

## ★The god of marriage



One wood is next to other one. But, their roots are said to intertwine.

## At our final destination, 'Oyama Shrine', we were able to have such a lot of fun in one shrine.

This plan is recommendable for tourists who enjoy various kinds of activities like sightseeing, travelling Shimanami Kaido by bikes and so on. While you are moving by bicycle, 'Mr. Shishido' of Taihei Kotsu riding a bus attends you. So, you can go by bus when you feel exhausted as well. In addition, if you have some plans like 'I want to visit there', 'I need to some local experiences as well', 'I want to eat cuisine in Onomichi', Mr. Shishido will make the suitable plan only for you based on your request and time to afford. So, you can enjoy Onomichi maximally even in a short while. 'I want to travel Onomichi and Shimanami Kaido' - Those who are interested in this trip, please feel free to contact to 'Mr. Shishido' of Taihei Kotsu Co., Ltd. who creates the best itinerary or Daimyo, our company (Shimatani in charge)

Thank you for your today's hard work



Taihei Kotsu Co., Ltd  
The person in charge  
Takayuki Shishido  
Tel: + 81 848 44 1600  
<https://taihei-kotsu.com/>

When you visit Onomichi, please feel free to contact me

Setouchi Annaisha Tabitasu  
Guide  
Hiroki Watanabe  
Tel: +81 90 4896 6823  
<https://www.tabitasu.net/>